

## 3D PDF DATASHEET



**eCATALOG**solutions



**BIM** catalogs.net



**PART**solutions



Create Your Individual 3D PDF Datasheet



Learn How to Create Your Mechanical Product Catalog



Learn How to Create Your BIM Product Catalog



Reduce Your Costs in Engineering and Purchasing

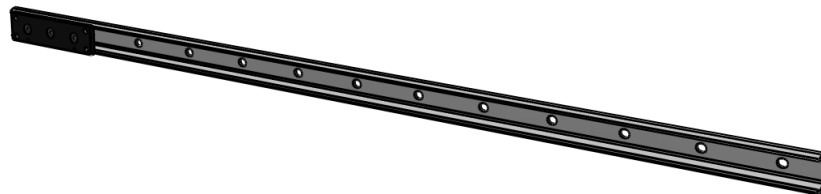


## TEN40-1040-CEN40-135

**ROLLON**  
BY TIMKEN

### 3D View

To activate the interactive 3D view, you must trust this document (see hint on the top) in Adobe Acrobat and click on the question mark.



#### Zoom

Moves you toward or away from objects in the scene when you drag vertically. You can also zoom with the hand tool by holding down Shift as you drag.



#### Pan

Moves the model vertically and horizontally only. You can also pan with the hand tool: Ctrl-drag.



#### Rotate

Turns 3D objects around relative to the screen. How the objects move depends on the starting view, where you start dragging and the direction in which you drag.

## 3D PDF DATASHEET

Create Your Individual 3D PDF  
Datasheet



 **eCATALOG**solutions

Learn How to Create Your  
Mechanical Product Catalog



 **BIM** catalogs.net

Learn How to Create Your BIM  
Product Catalog



 **PART**solutions

Reduce Your Costs in  
Engineering and Purchasing



# TEN40-1040-CEN40-135

**ROLLON**  
BY TIMKEN

2D derivation



ISO View



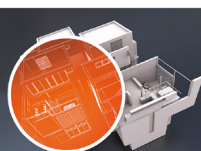
## 3D PDF DATASHEET

Create Your Individual 3D PDF Datasheet



**eCATALOG**solutions

Learn How to Create Your Mechanical Product Catalog



**BIM** catalogs.net

Learn How to Create Your BIM Product Catalog



**PART**solutions

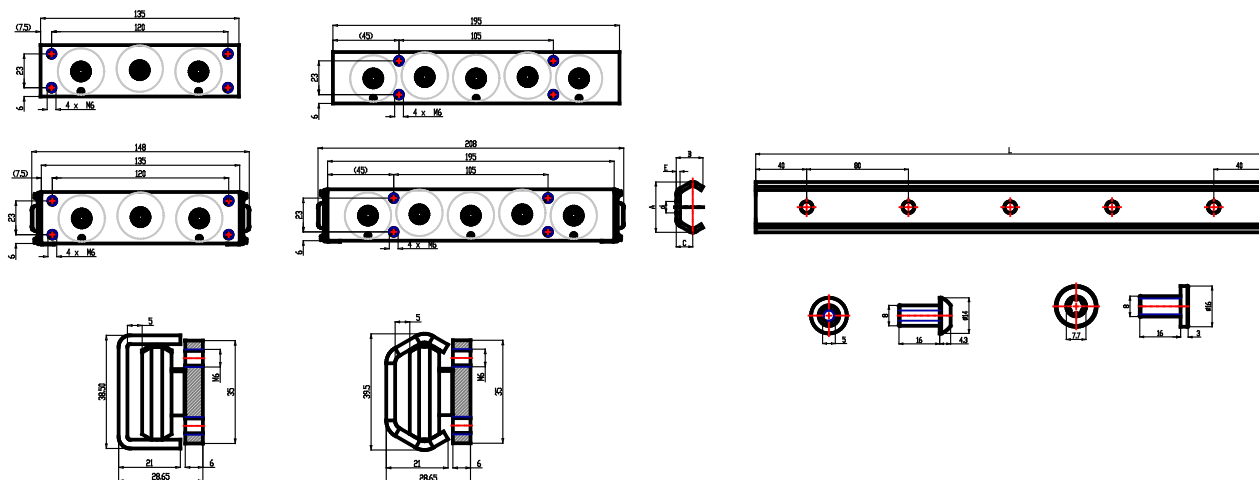
Reduce Your Costs in Engineering and Purchasing



## TEN40-1040-CEN40-135

**ROLLON**  
BY TIMKEN

### Technical drawings



## 3D PDF DATASHEET

Create Your Individual 3D PDF  
Datasheet



 **eCATALOG**solutions

Learn How to Create Your  
Mechanical Product Catalog



 **BIM** catalogs.net

Learn How to Create Your BIM  
Product Catalog



 **PART**solutions

Reduce Your Costs in  
Engineering and Purchasing



## TEN40-1040-CEN40-135

**ROLLON**  
BY TIMKEN

### Technical Data

CODE ()	TEN40
L (Rail length / mm)	1040
SLDR1 (Slider type 1)	CEN40-135
SLDR2 (Slider type 2)	-
SLDR3 (Slider type 1)	-

## 3D PDF DATASHEET

Create Your Individual 3D PDF  
Datasheet



 **eCATALOG**solutions

Learn How to Create Your  
Mechanical Product Catalog



 **BIM** catalogs.net

Learn How to Create Your BIM  
Product Catalog



 **PART**solutions

Reduce Your Costs in  
Engineering and Purchasing



## TEN40-1040-CEN40-135

**ROLLON**  
BY TIMKEN

### Bill of Materials

N°	Description	Amount
1	TEN40-1040-CEN40-135	1